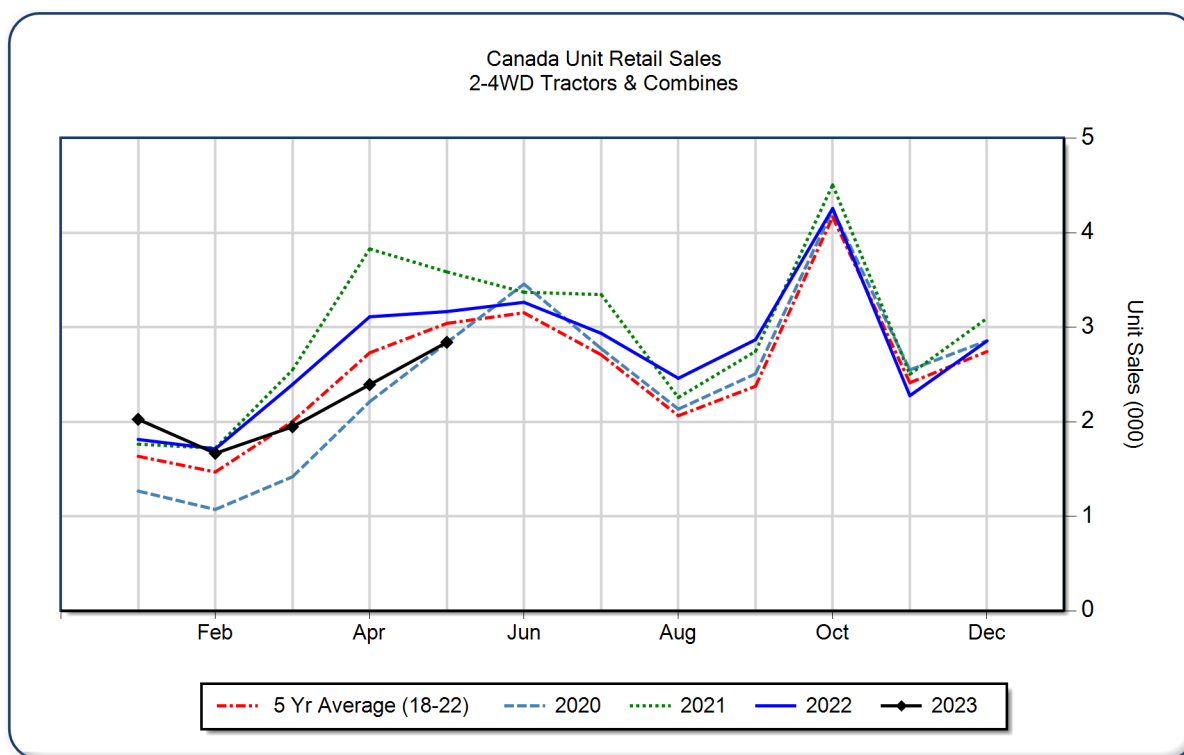


## AEM Canada Ag Tractor and Combine Report May 2023

Copyright, AEM. All rights reserved. If data is referenced, please acknowledge AEM as the source.

	May			YTD - May			Beginning Inventory May 2023
	2023	2022	%Chg	2023	2022	%Chg	
<b>2WD Farm Tractors</b>							
< 40 HP	1,824	2,138	-14.7	6,103	7,866	-22.4	13,100
40 < 100 HP	470	541	-13.1	2,241	2,310	-3.0	4,115
100+ HP	365	345	5.8	1,471	1,434	2.6	1,783
<b>Total 2WD Farm Tractors</b>	<b>2,659</b>	<b>3,024</b>	<b>-12.1</b>	<b>9,815</b>	<b>11,610</b>	<b>-15.5</b>	<b>18,998</b>
<b>4WD Farm Tractors</b>	<b>81</b>	<b>64</b>	<b>26.6</b>	<b>385</b>	<b>264</b>	<b>45.8</b>	<b>108</b>
<b>Total Farm Tractors</b>	<b>2,740</b>	<b>3,088</b>	<b>-11.3</b>	<b>10,200</b>	<b>11,874</b>	<b>-14.1</b>	<b>19,106</b>
<b>Self-Prop Combines</b>	<b>101</b>	<b>78</b>	<b>29.5</b>	<b>673</b>	<b>324</b>	<b>107.7</b>	<b>431</b>



The AEM Ag Tractor and Combine Report is provided monthly and is derived from AEM member companies through proprietary statistical reporting programs. The data is provided by AEM members and represents preliminary monthly retail sales of Ag equipment. Separate reports are available for the U.S., Canada and Russia. For more information, please visit: <https://www.aem.org/market-share-statistics/us-ag-tractor-and-combine-reports>. **Attention Media:** To speak with an AEM spokesperson about the data, please contact Sandra Mason at [smason@aem.org](mailto:smason@aem.org).